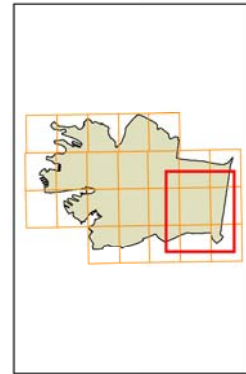


Sydney Development Control Plan 2012

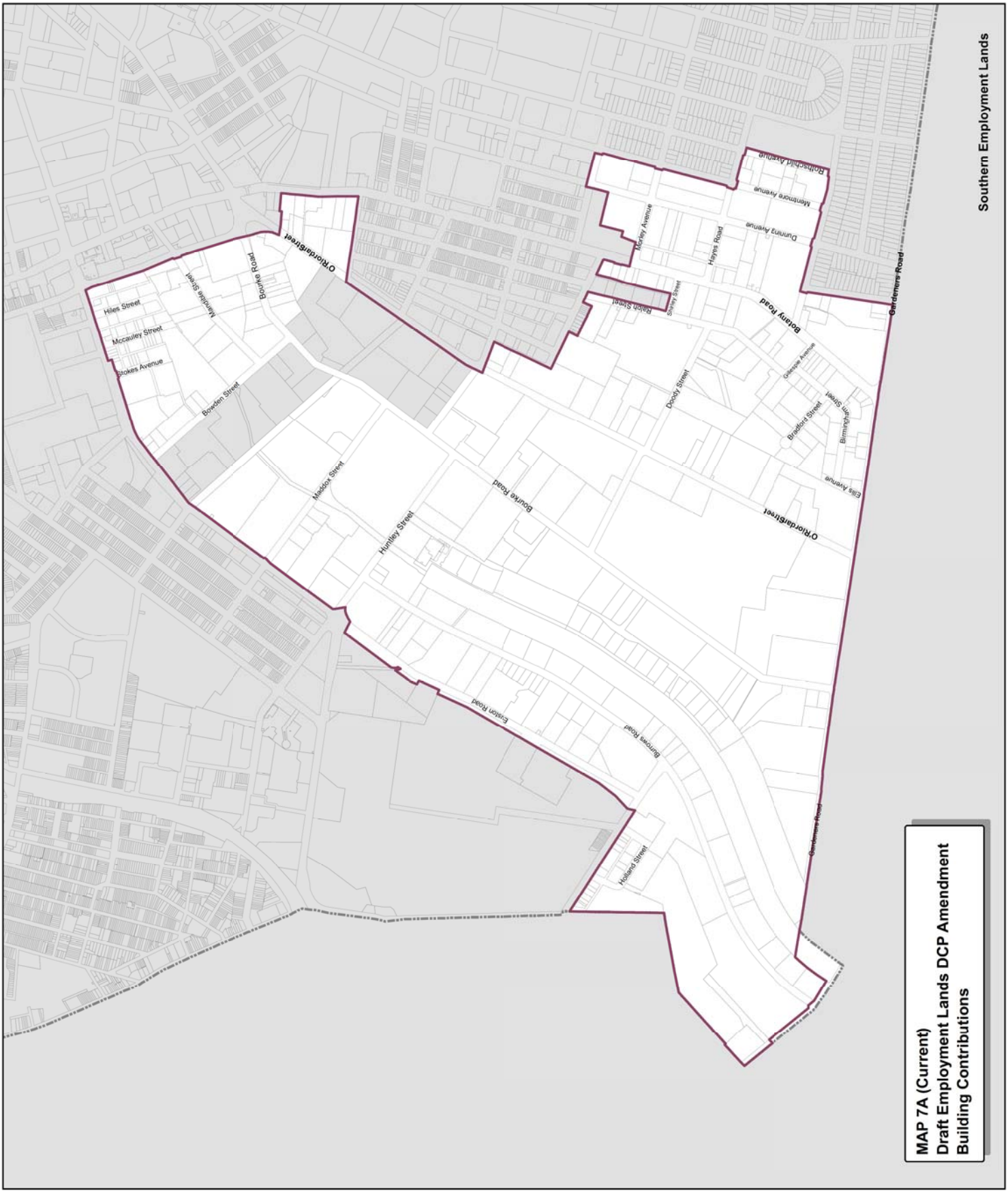


Building contributions map

- Legend**
- Employment Lands Strategy boundary
 - Contributing
 - Detracting
 - Neutral
 - Land excluded from this DCP



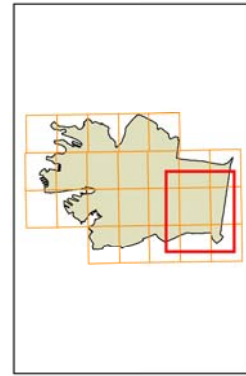
Copyright ©2012 City of Sydney Council. All Rights Reserved. Prepared by: Strategic Planning & Urban Design
 Sydney City Council. All Rights Reserved. Prepared by: Strategic Planning & Urban Design
 and the publisher shall not be liable for any errors or omissions in this map or any part thereof.
 The City of Sydney Council is not responsible for any errors or omissions in this map or any part thereof.
 No part of this map may be reproduced without written permission.



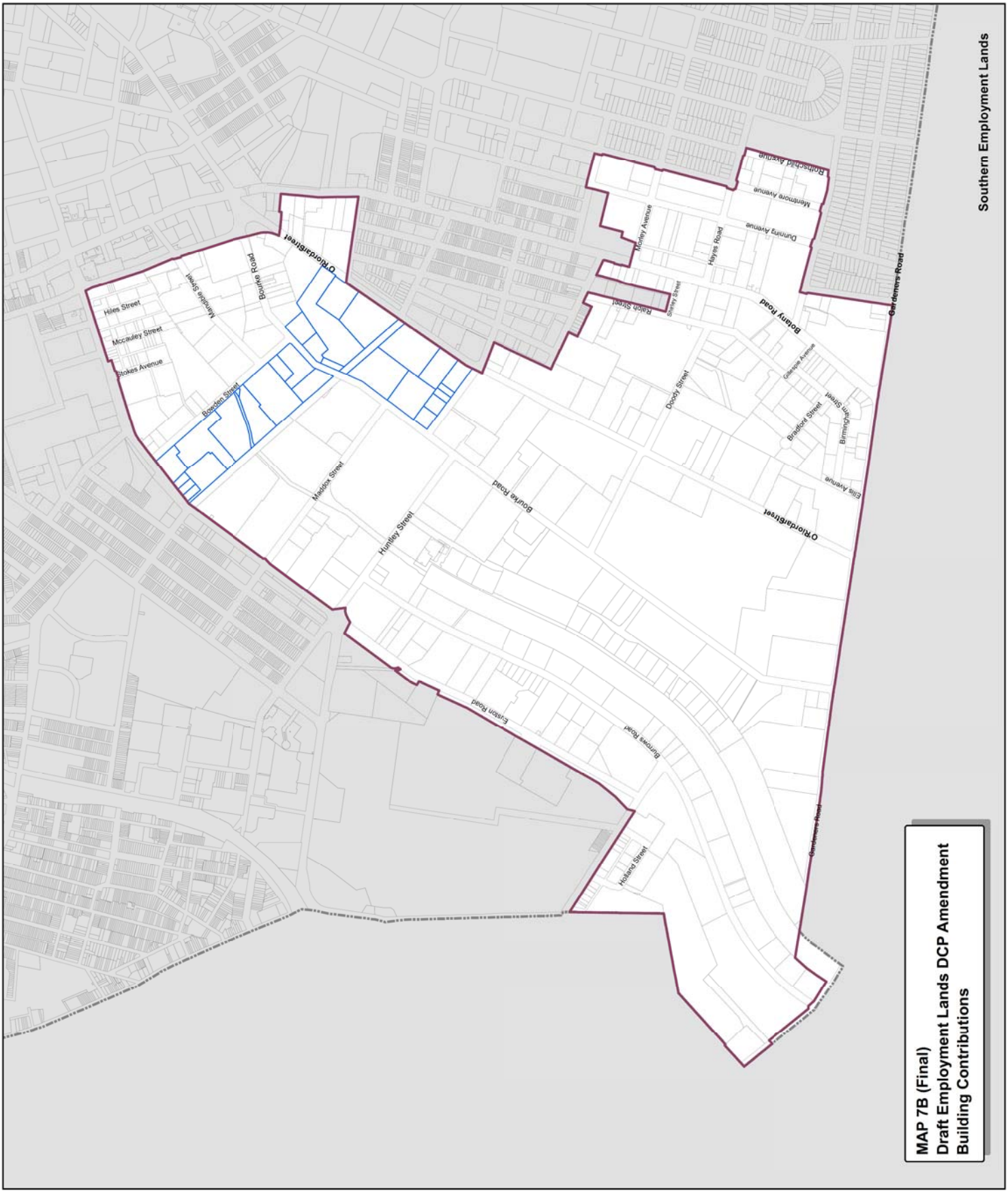
MAP 7A (Current)
Draft Employment Lands DCP Amendment
Building Contributions

Building contributions map

- Legend**
- Employment Lands Strategy boundary
 - Affected sites
 - Contributing
 - Detracting
 - Neutral



Copyright ©2012 City of Sydney Council. All Rights Reserved.
 Copyright ©2012 Land and Property Information. All Rights Reserved.
 Datum: GDA94
 Prepared by: Strategic Planning & Urban Design
 File: D:\C:\Users\p12\Documents\DCP12\Map\Map 7B Building Contributions
 Date of any map observations: No part of this map may be reproduced without written permission.
 .pex.mxd



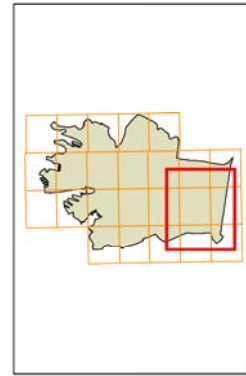
**MAP 7B (Final)
 Draft Employment Lands DCP Amendment
 Building Contributions**

Sydney Development Control Plan 2012

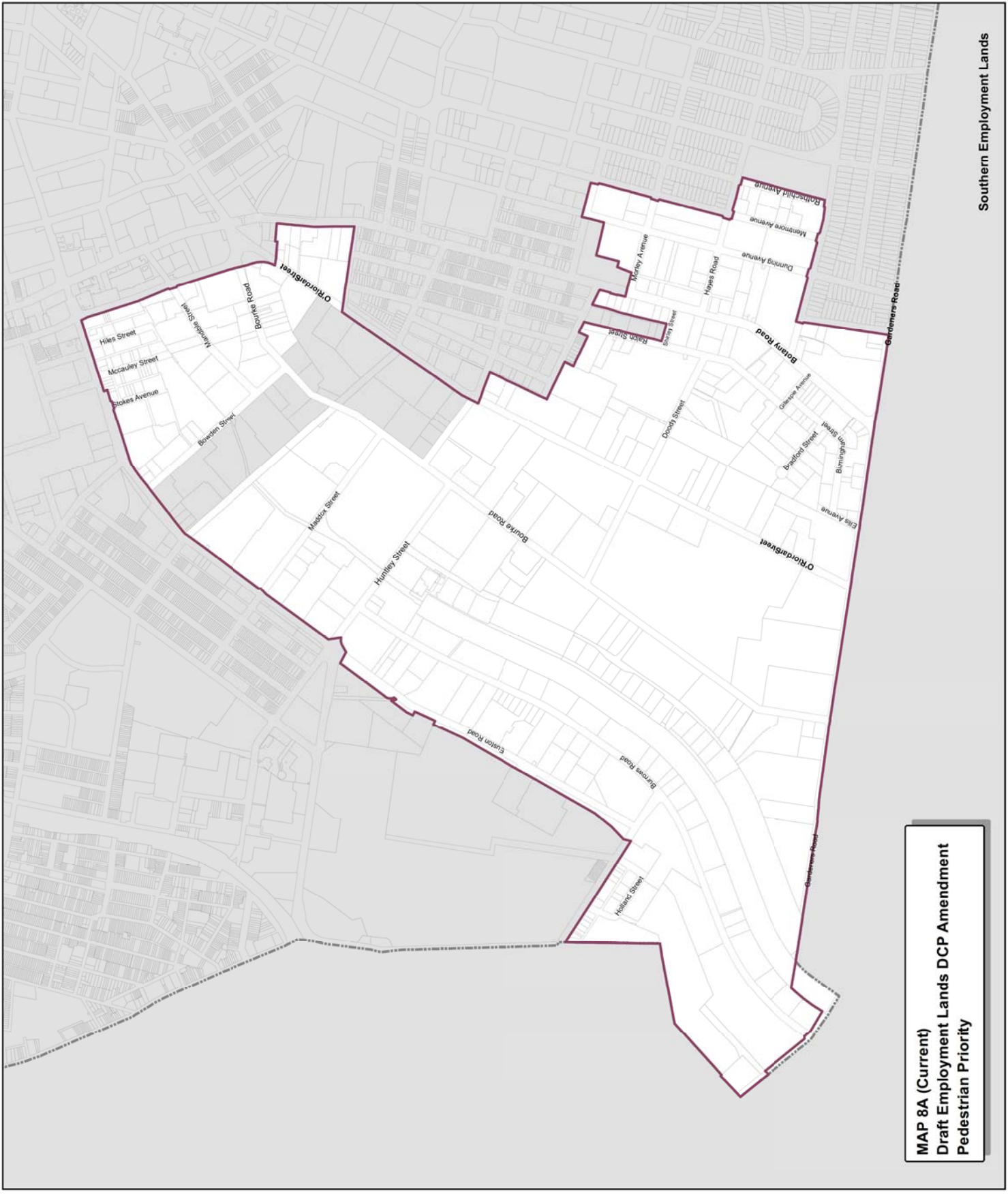


Pedestrian priority map

- Legend**
- Employment Lands Strategy boundary
 - New vehicle access restricted
 - New vehicle access not preferred
 - Land excluded from this DCP



Copyright ©2012 City of Sydney Council. All Rights Reserved.
 Preparation: URS, Zone 56
 Sydney, NSW
 Date: 02/04/12
 Prepared by: Strategic Planning & Urban Design
 and the publisher and/or contributor accept no responsibility
 for any errors or omissions. While all care is taken to ensure a high
 quality product, the City of Sydney does not warrant the
 accuracy of any map information. No part of this map may be
 reproduced without written permission.



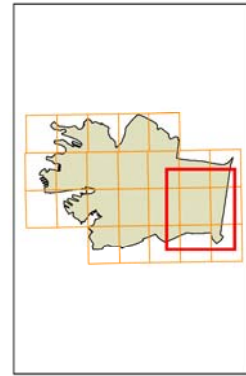
MAP 8A (Current)
Draft Employment Lands DCP Amendment
Pedestrian Priority

Sydney Development Control Plan 2012

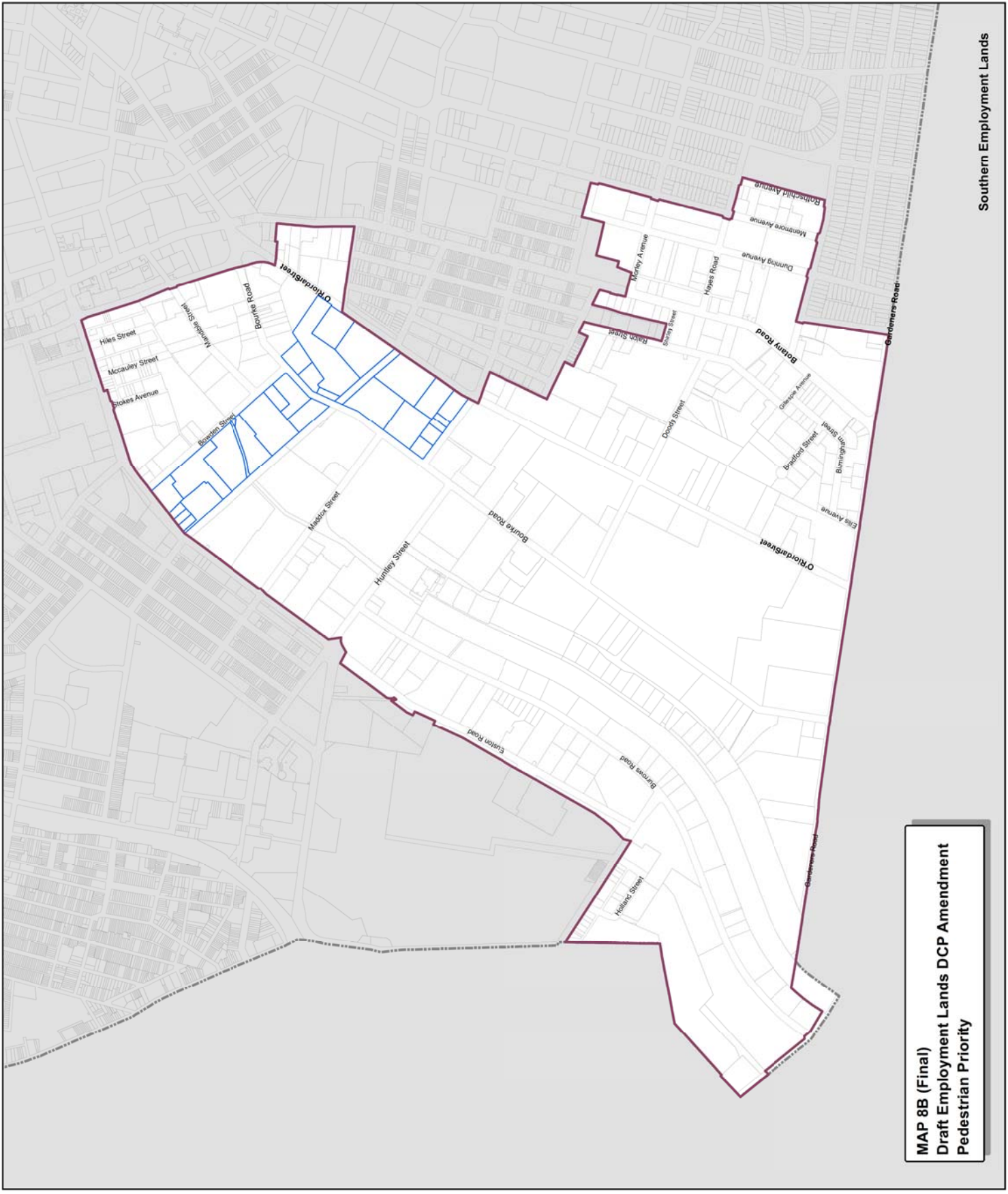


Pedestrian priority map

- Legend**
- Employment Lands Strategy boundary
 - Affected sites
 - New vehicle access restricted
 - New vehicle access not preferred



Copyright ©2012 City of Sydney Council. All Rights Reserved.
 Projection: MGA Zone 56
 Datum: GDA94
 Copyright ©2012. Used and reproduced by permission. All Rights Reserved.
 and the publisher and/or contributor accept no responsibility
 for any errors or omissions. While all care has been taken to ensure a high
 quality product, the City of Sydney Council does not accept any liability
 for any errors or omissions. No part of this map may be
 reproduced without written permission.



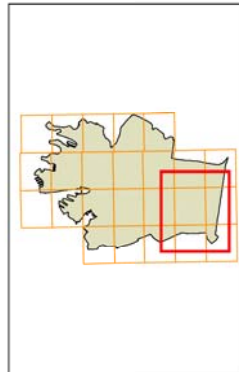
MAP 8B (Final)
Draft Employment Lands DCP Amendment
Pedestrian Priority

**Sydney
Development
Control Plan 2012**

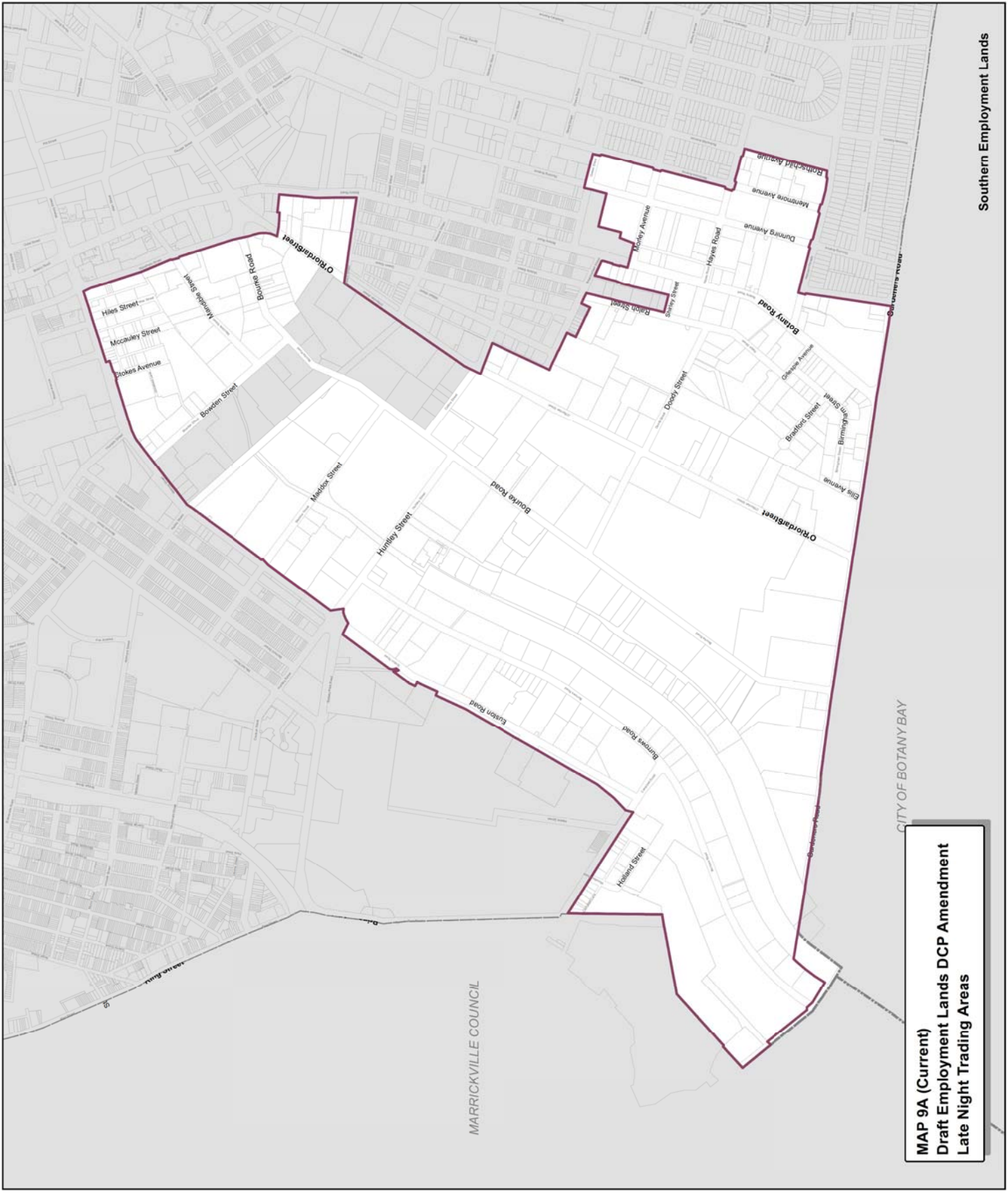


Late night trading areas map

- Legend**
- Employment Lands Strategy boundary
 - City Living Areas
 - Late Night Management Areas
 - Local Centre Areas
 - Land excluded from this DCP



Copyright ©2012 City of Sydney Council. All Rights Reserved.
 Permission is granted to reproduce this map for personal use only.
 No part of this map may be reproduced without written permission.
 File: D:\Corporal\GIS\DCP\2012\MAPS\ELLS_SDCP2012_1A3A_current.mxd



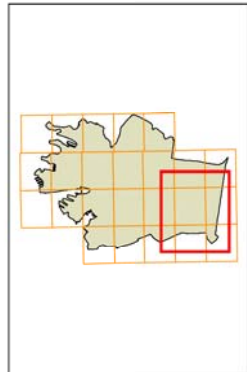
MAP 9A (Current)
Draft Employment Lands DCP Amendment
Late Night Trading Areas

Sydney Development Control Plan 2012

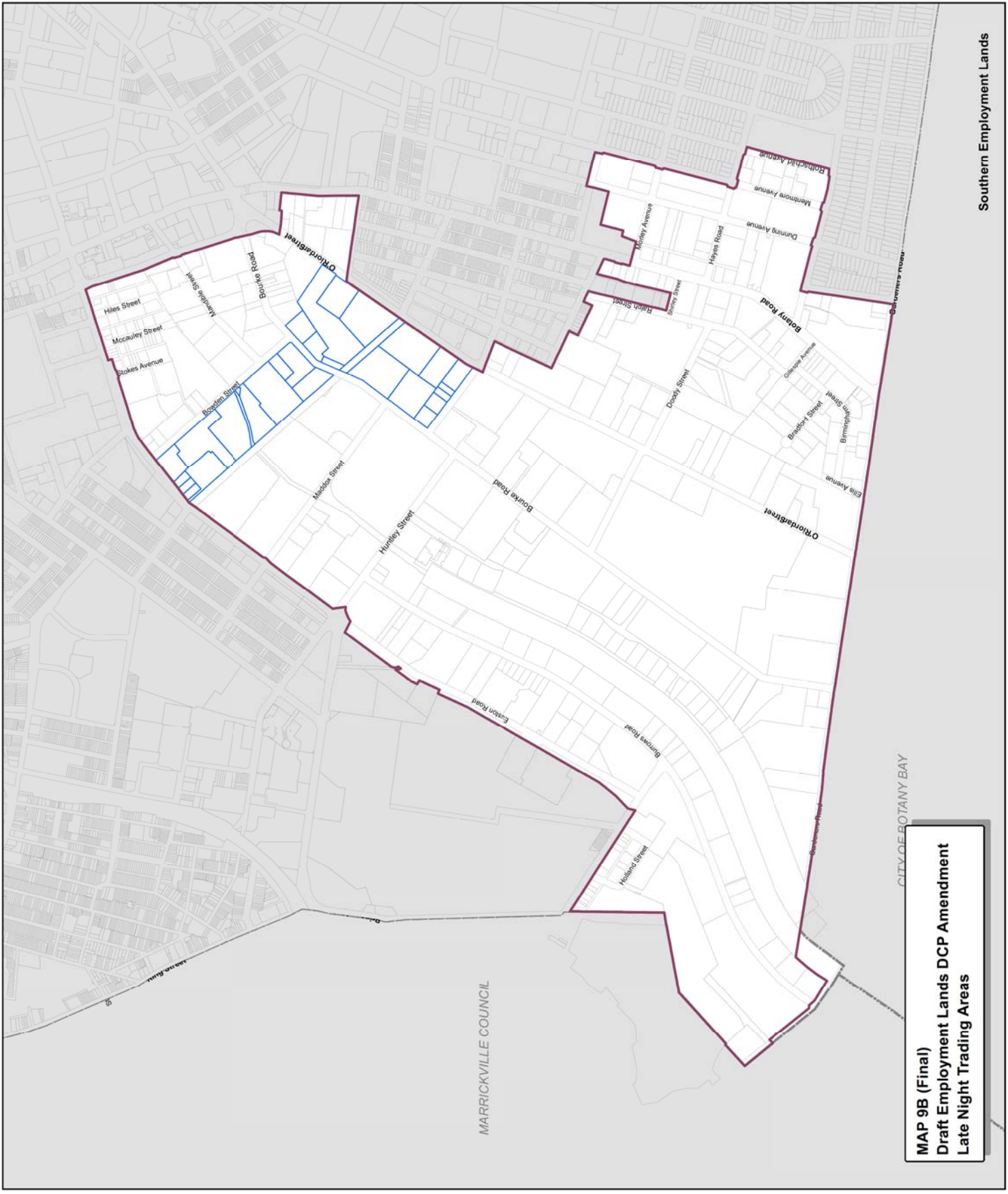


Late night trading areas map

- Legend**
- Employment Lands Strategy boundary
 - Affected sites
 - City Living Areas
 - Late Night Management Areas
 - Local Centre Areas



Copyright ©2014 City of Sydney Council. All Rights Reserved.
 Permission is granted to reproduce this information in digital form for personal use only. This information is provided for informational purposes only. The City of Sydney Council is not responsible for any errors or omissions in this information. No part of this map may be reproduced without written permission.



MAP 9B (Final)
Draft Employment Lands DCP Amendment
Late Night Trading Areas

Southern Employment Lands

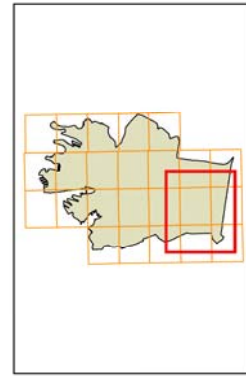
Sydney Development Control Plan 2012



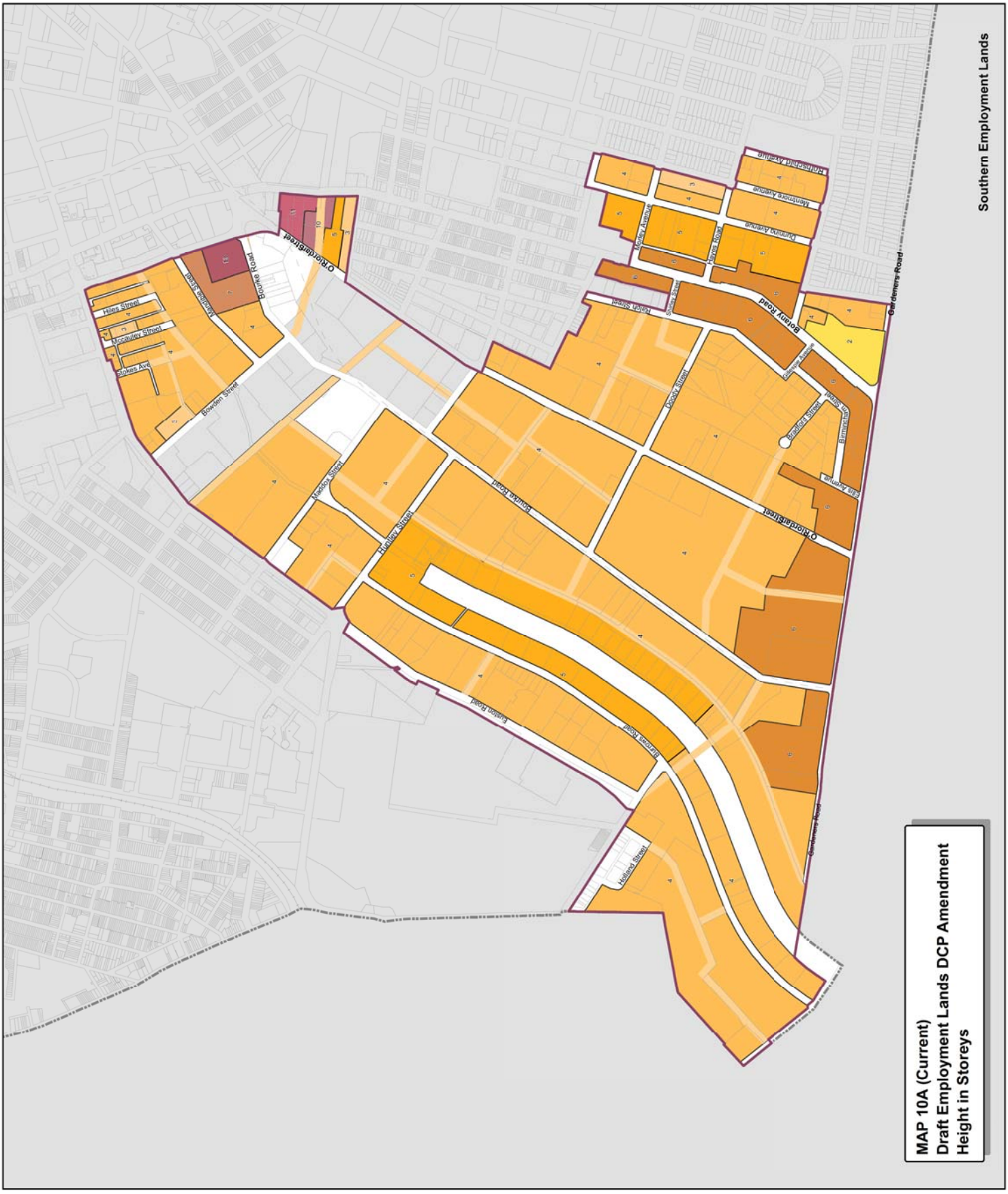
Height in storeys map

Legend

- Employment Lands Strategy boundary
- 1 Storey
- 2 Storeys
- 3 Storeys
- 4 Storeys
- 5 Storeys
- 6 Storeys
- 7 Storeys
- 8 Storeys
- 9 Storeys
- 10 Storeys
- 11 Storeys
- 12 Storeys
- 13 Storeys
- 14 Storeys
- 15 Storeys
- >15 Storeys
- Land excluded from this DCP



Copyright ©2012 City of Sydney Council. All Rights Reserved.
 Profession: UAS, Zone 46
 Datum: GDA94
 Prepared by: Strategic Planning & Urban Design
 File: D:\DCP\2012\DCP02\DCP02\MDCU
 Date: 11/01/2012 10:00:00 AM
 Drawn by: J. Smith
 Checked by: J. Smith
 Approved by: J. Smith
 Date of any map amendments: No part of this map may be reproduced without written permission.



MAP 10A (Current)
Draft Employment Lands DCP Amendment
Height in Storeys

Sydney Development Control Plan 2012

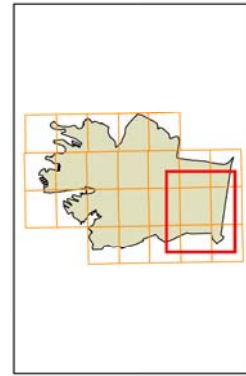


Height in storeys map

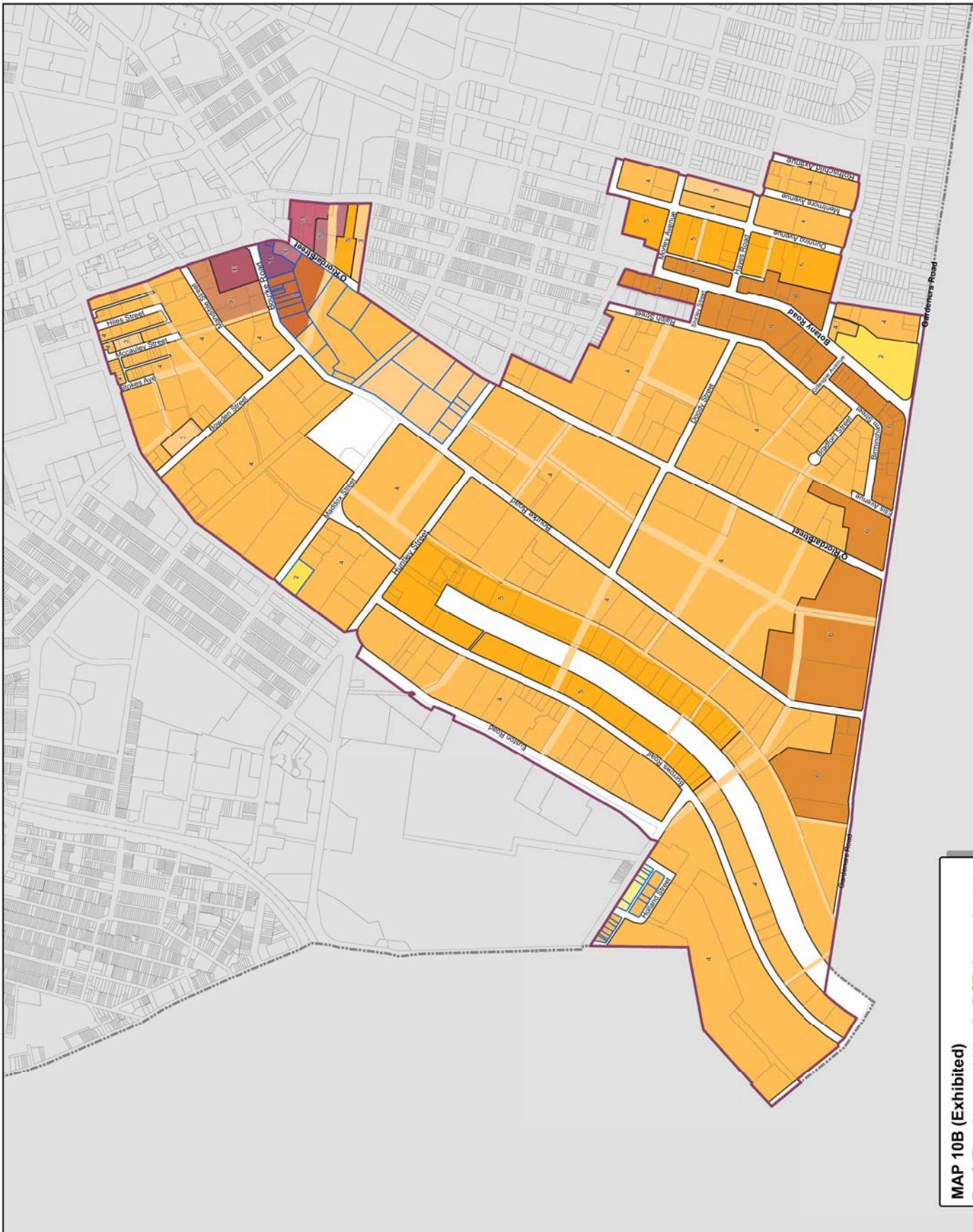
Legend

- Employment Lands Strategy boundary
- Affected sites

- 1 Storey
- 2 Storeys
- 3 Storeys
- 4 Storeys
- 5 Storeys
- 6 Storeys
- 7 Storeys
- 8 Storeys
- 9 Storeys
- 10 Storeys
- 11 Storeys
- 12 Storeys
- 13 Storeys
- 14 Storeys
- 15 Storeys
- >15 Storeys



Copyright ©2014 City of Sydney Council. All Rights Reserved.
 Projection: UTM, Zone 56
 Datum: GDA94
 Prepared by: SPURD, 2014
 File: D:\DCP\2012\DCP002\MXD\DCP002_150312_10B_Storeys_height.mxd
 Date of any map amendments: N/A
 Reproduction without written permission.



MAP 10B (Exhibited)
Draft Employment Lands DCP Amendment
Height in Storeys

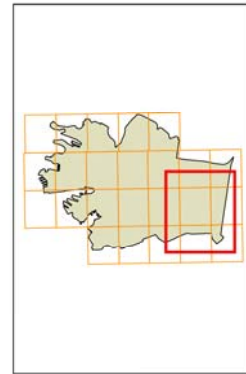
Sydney Development Control Plan 2012



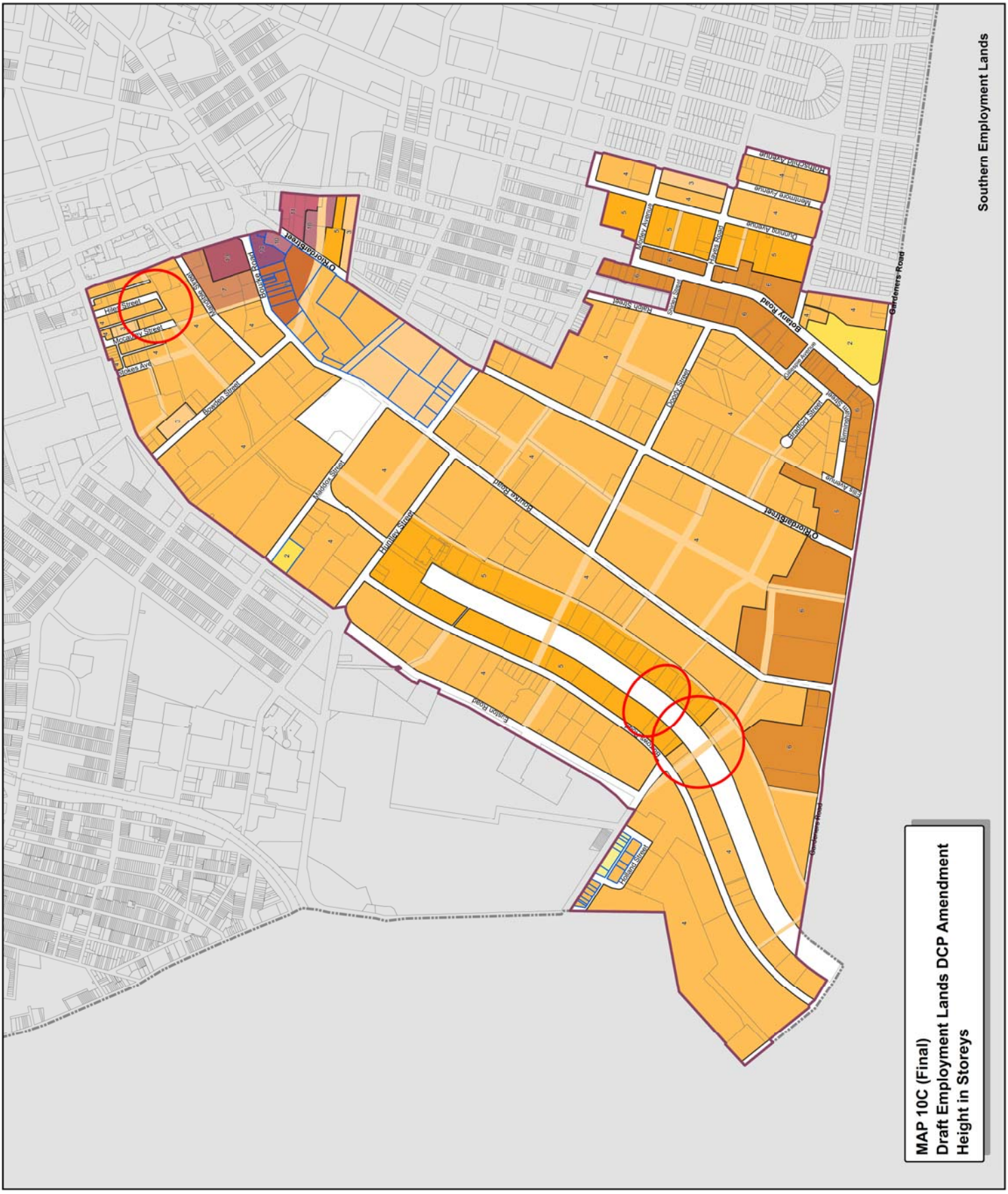
Height in storeys map

Legend

- Employment Lands Strategy boundary
- Affected sites
- 1 Storey
- 2 Storeys
- 3 Storeys
- 4 Storeys
- 5 Storeys
- 6 Storeys
- 7 Storeys
- 8 Storeys
- 9 Storeys
- 10 Storeys
- 11 Storeys
- 12 Storeys
- 13 Storeys
- 14 Storeys
- 15 Storeys
- >15 Storeys



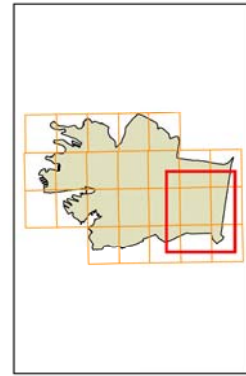
Copyright ©2014 City of Sydney Council. All Rights Reserved.
 Provision: MAP_Zone 96
 Date: 02/04/2014
 and the publisher/author contributor accept no responsibility
 for any errors or omissions. File: C:\Documents\20090201\MADCP
 Group of any map reproductions. No part of this map may be
 reproduced without written permission.



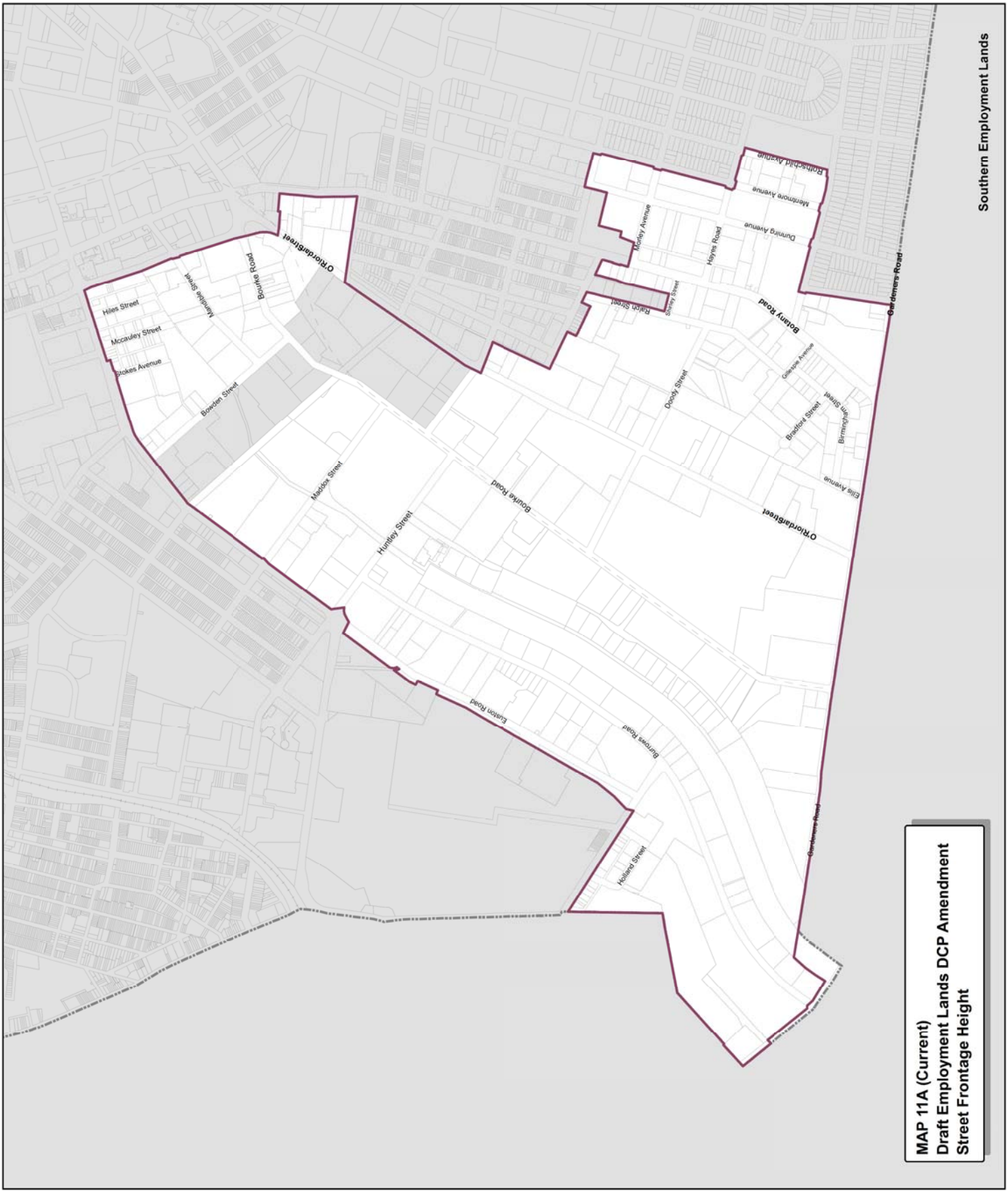
MAP 10C (Final)
Draft Employment Lands DCP Amendment
Height in Storeys

**Building street frontage height
in storeys map**

- Legend**
- Employment Lands Strategy boundary
 - 1 Storey
 - 2 Storeys
 - 3 Storeys
 - 4 Storeys
 - 5 Storeys
 - 6 Storeys
 - 7 Storeys
 - 8 Storeys
 - 9 Storeys
 - 10 Storeys
 - Existing height
 - Land excluded from this DCP



Copyright ©2012 City of Sydney Council. All Rights Reserved. Projection: MGA Zone 56
 Copyright ©2012 Land and Property Information. All Rights Reserved. Drawn: GD/MS
 and the publisher accept no responsibility for any errors or omissions. Prepared by: Strategic Planning & Urban Design
 City of Sydney. File: C:\GIS\Projects\DCP\DCP11A\DCP11A\DCP11A11A02.dwg
 Date of map publication: 18/08/2012. Date of map update: 18/08/2012. Date of map update: 18/08/2012.
 Reproduction without written permission.

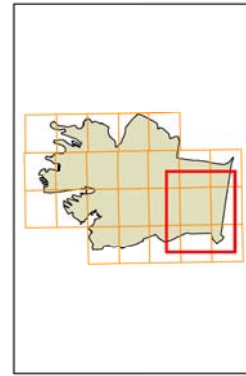


**MAP 11A (Current)
Draft Employment Lands DCP Amendment
Street Frontage Height**

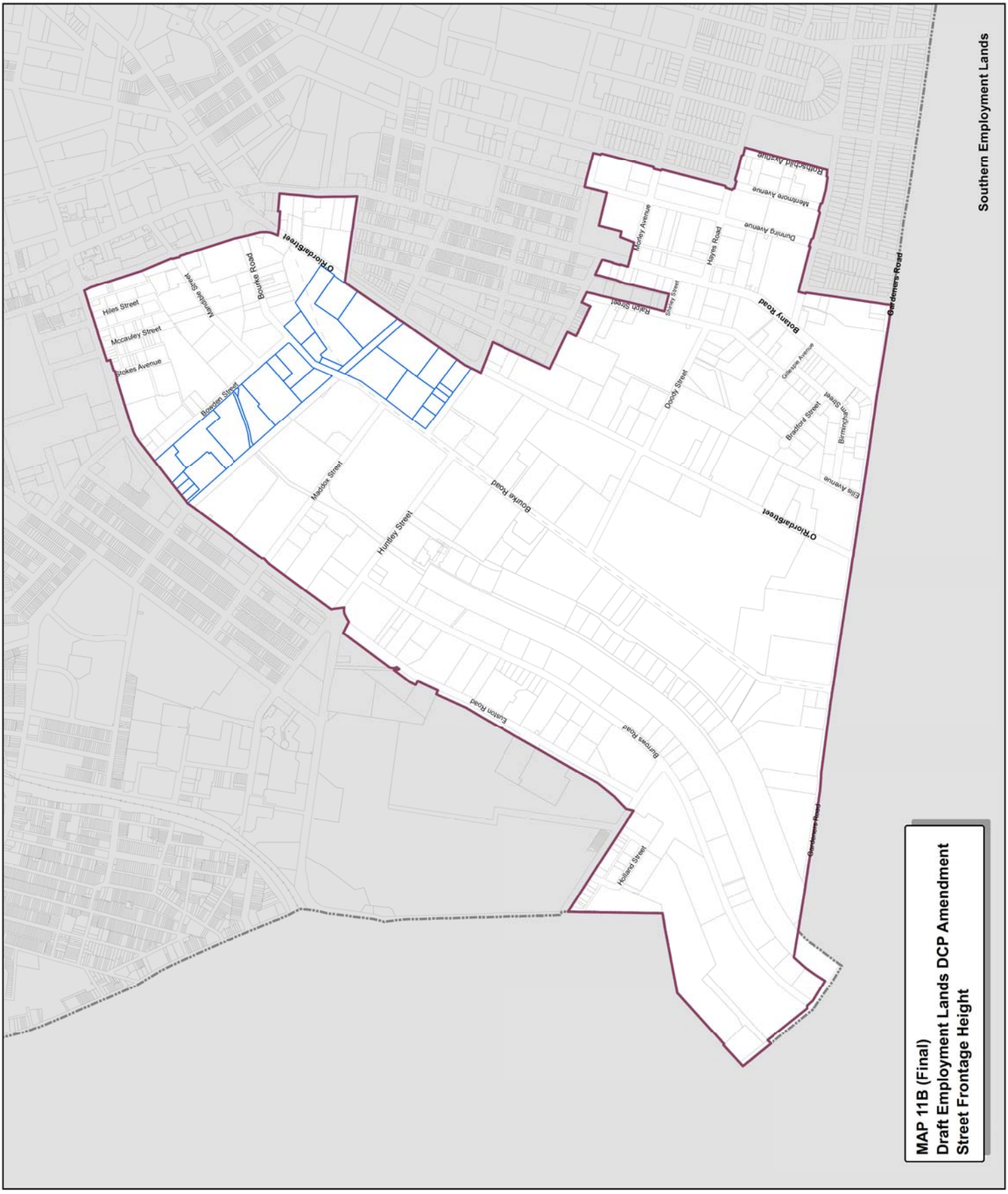


**Building street frontage height
in storeys map**

- Legend**
- Employment Lands Strategy boundary
 - Affected sites
 - 1 Storey
 - 2 Storeys
 - 3 Storeys
 - 4 Storeys
 - 5 Storeys
 - 6 Storeys
 - 7 Storeys
 - 8 Storeys
 - 9 Storeys
 - 10 Storeys
 - Existing height



Copyright ©2011 City of Sydney Council. All Rights Reserved.
 Copyright ©2012 Land and Property Information. All Rights Reserved.
 and the publisher and contributors accept no responsibility for any errors or omissions.
 File: D:\C:\Users\m\Documents\DCP\DCP2012\Map\DCP2012_StreetFrontageHeight_11B.mxd
 Date: 11/08/2012 11:08:00 AM
 User: m\m
 Version: 11.0



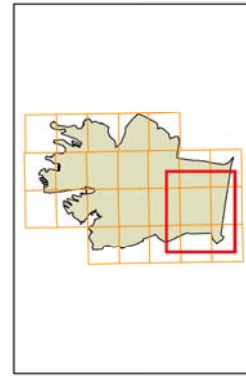
MAP 11B (Final)
Draft Employment Lands DCP Amendment
Street Frontage Height

Sydney Development Control Plan 2012

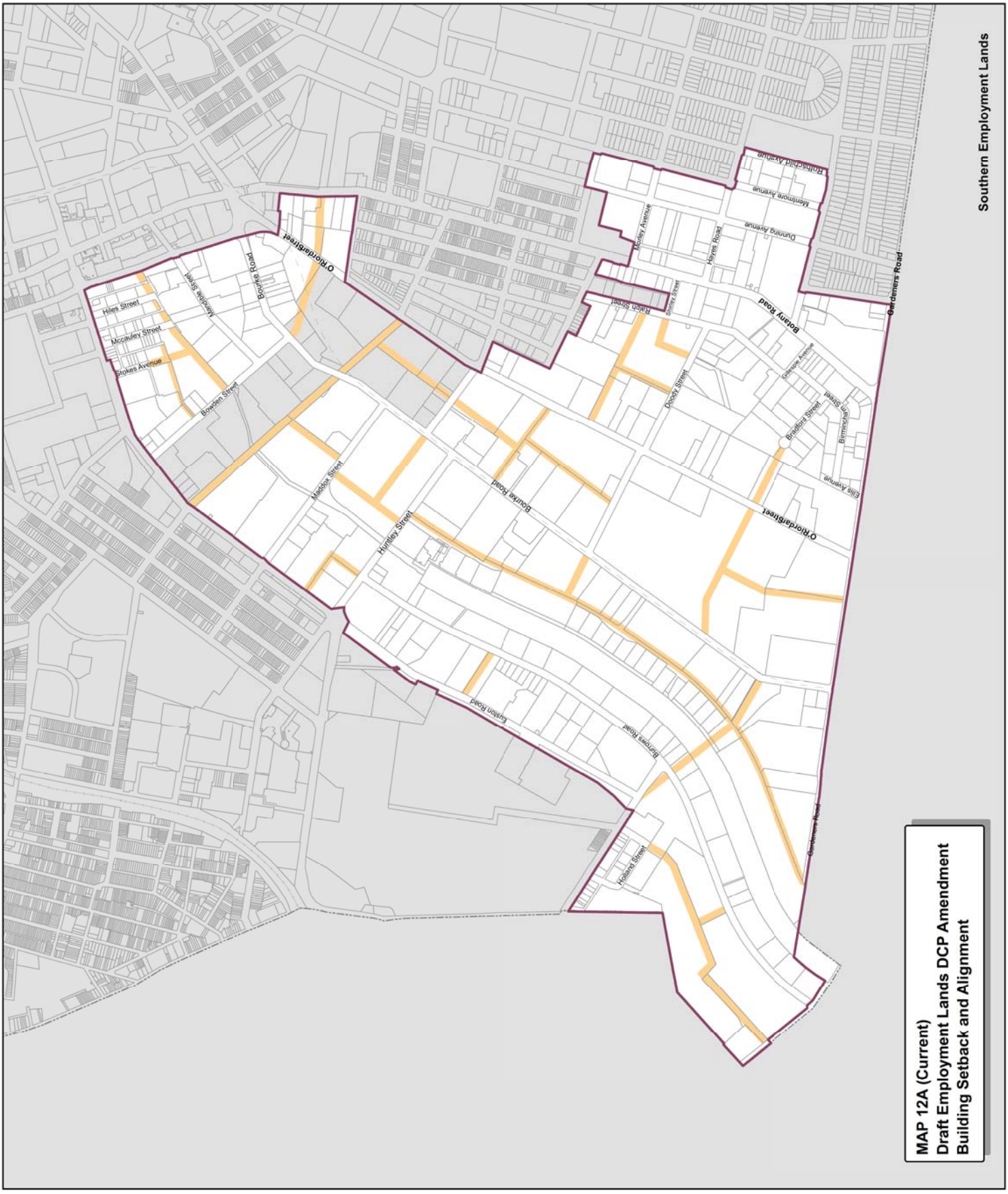


Building setback and alignment map

- Legend**
- 4m - Build to alignment
 - 5m - Build to alignment
 - 6m - Minimum setback
 - 8m - Minimum setback
 - 10m - Landscape setback
 - 12m - Landscape setback
 - 12.5m - Minimum setback
 - Land excluded from this DCP



Copyright ©2014 City of Sydney Council. All Rights Reserved.
 Prepared by Strategic Planning & Urban Design
 File: DCP02012_SydneyAlignment_Cover.mxd
 EUS: DCP0212_SydneyAlignment_Cover.mxd
 Reproduction without written permission.



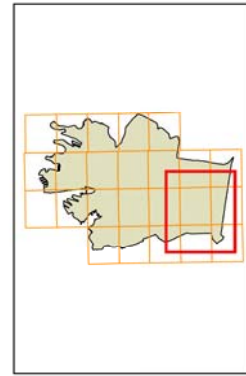
MAP 12A (Current)
Draft Employment Lands DCP Amendment
Building Setback and Alignment

Sydney Development Control Plan 2012

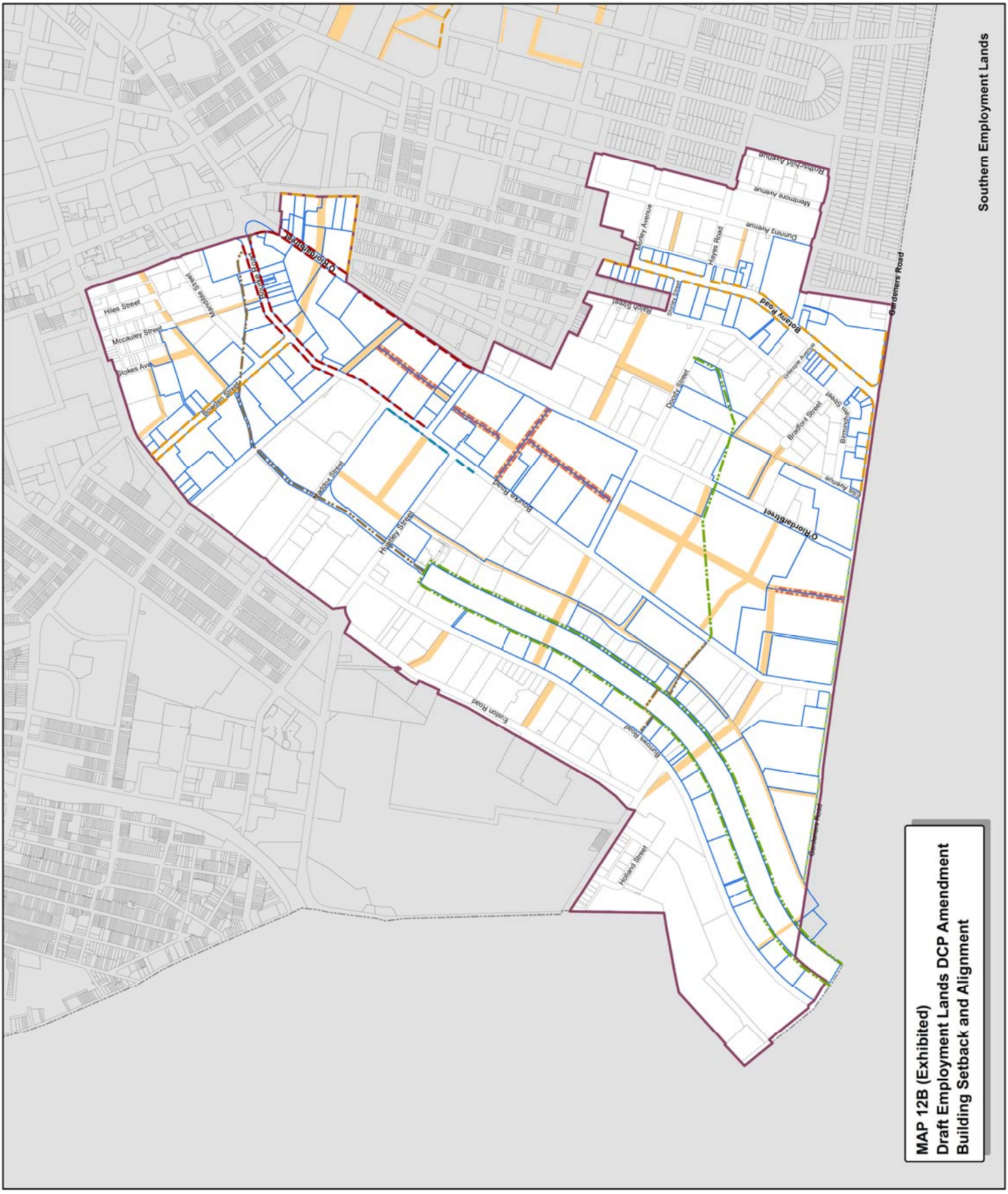


Building setback and alignment map

- Legend**
- Employment Lands Strategy boundary
 - Affected sites
 - Employment Lands Setbacks and Alignments**
 - 1.4m Footpath widening
 - 2.4m Footpath widening
 - 4m Footpath widening
 - 6.4m Footpath widening
 - 5m Landscape setback
 - 10.5m Street zone setback
 - Liveable Green Network var. width
 - Liveable Green Network 10m



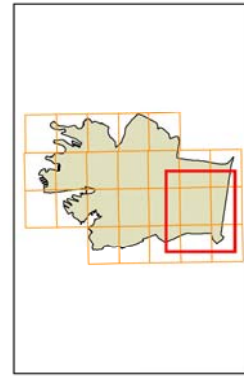
Copyright © 2014 City of Sydney Council. All Rights Reserved. Projection: GDA 2011 Zone 56
 Copyright © 2014 Land and Property Information, All Rights Reserved. Drawn: GDA
 and the publisher shall not be liable for any errors or omissions in this publication. Prepared by: SPUD
 Date: 15/05/2014
 File: O:\Development\GIS\DCP2012\AM2012\City of Sydney\Map\AM2012_BuildingSetbackAndAlignment.mxd
 Date of any map observations: No part of this map may be reproduced without written permission.
 ECL: 2012/2012_BuildingSetbackAndAlignment.mxd



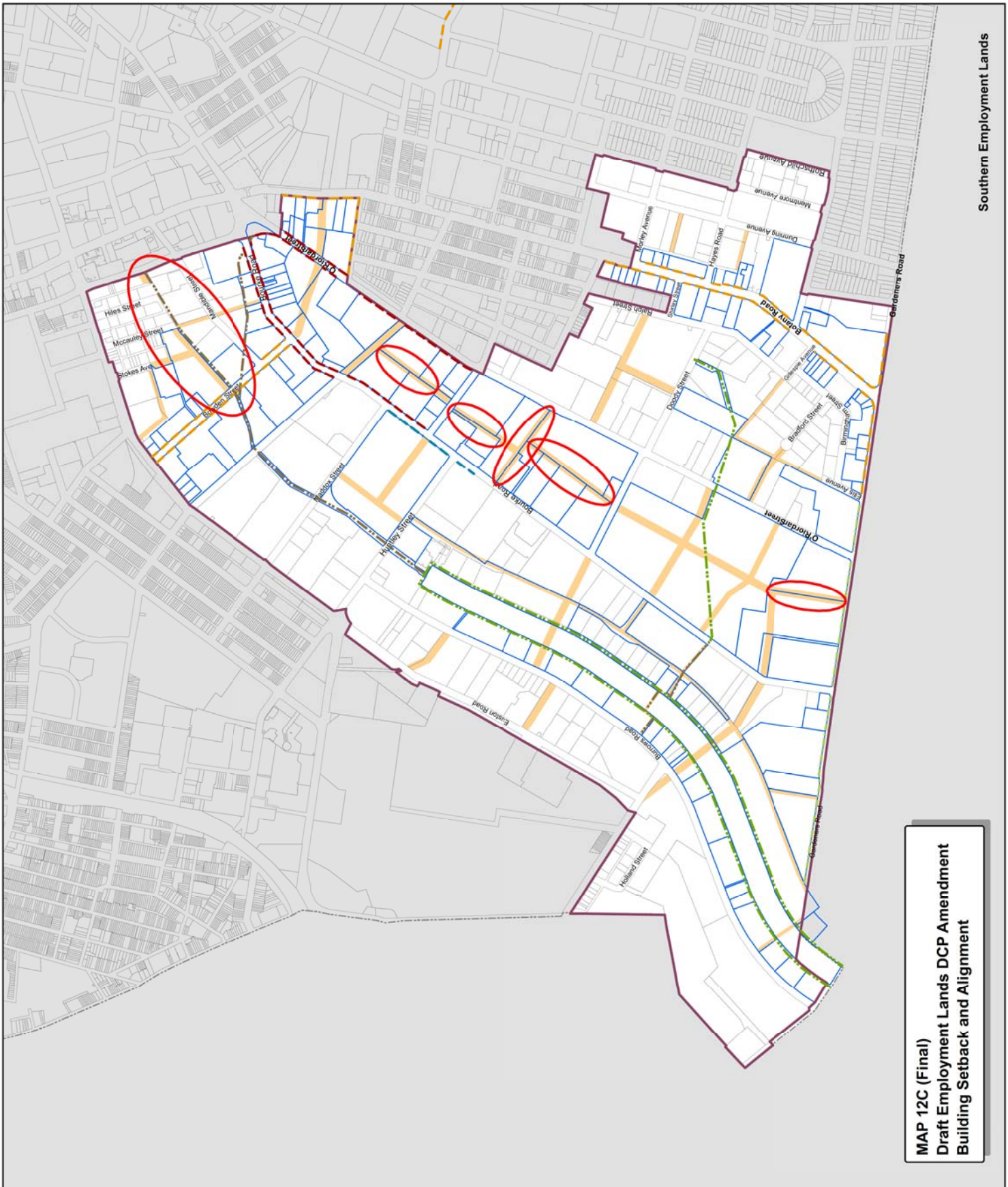
MAP 12B (Exhibited)
Draft Employment Lands DCP Amendment
Building Setback and Alignment

Building setback and alignment
map

- Legend**
- Employment Lands Strategy boundary
 - Affected sites
 - Employment Lands Setbacks and Alignments**
 - 1.4m Footpath widening
 - 2.4m Footpath widening
 - 4m Footpath widening
 - 6.4m Footpath widening
 - 5m Landscape setback
 - Liveable Green Network var. width
 - Liveable Green Network 10m



Copyright ©2014 City of Sydney Council. All Rights Reserved. Projection: GDA2011 Zone 56
 Copyright ©2014 Land and Property Information, All Rights Reserved. Drawn: GD/MLA
 and the publisher, editor, contributors accept no responsibility for the accuracy of the information contained in this publication.
 Sydney City Council, 100 George Street, Sydney, NSW 1514. Prepared by: SP/CD
 Date of publication: 15/05/2014. File: O:\Development\GIS\DCP\2012\AMC14\Map 12C\Map 12C.dwg
 Date of map observations: No part of this map may be reproduced without written permission. E.L.S. 2012/2012_LandDevelopment_Map12C



MAP 12C (Final)
Draft Employment Lands DCP Amendment
Building Setback and Alignment